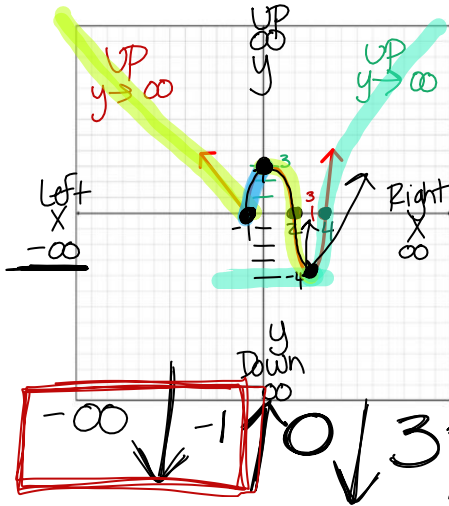


3.1 Characteristics of Functions

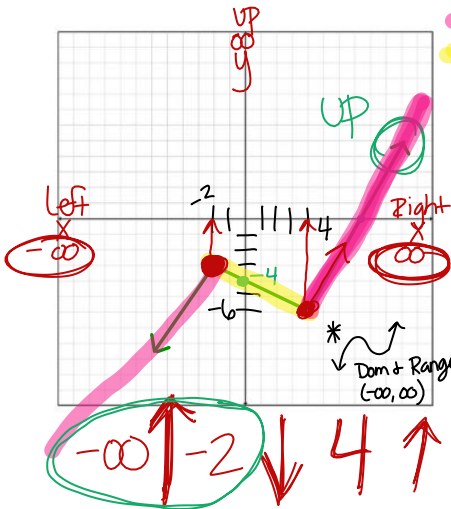
Name: _____



- Increasing Interval(s): $(-1, 0)$ $(3, \infty)$
- Decreasing Interval(s): $(-\infty, -1)$ $(0, 3)$
- Constant Interval(s): none
- Absolute Minimum: $(3, -4)$
- Absolute Maximum: none
- Relative Minimum: $(-1, 0)$
- Relative Maximum: $(0, 3)$
- Domain: $(-\infty, \infty)$
- Range: $[-4, \infty)$
- X-intercept: $(-1, 0)$ $(2, 0)$ $(4, 0)$
- Y-intercept: $(0, 3)$ L
- End Behavior:

$x \rightarrow -\infty$	$y \rightarrow \infty$
$x \rightarrow \infty$	$y \rightarrow \infty$

$x \rightarrow -\infty$	$y \rightarrow \infty$
$x \rightarrow \infty$	$y \rightarrow \infty$



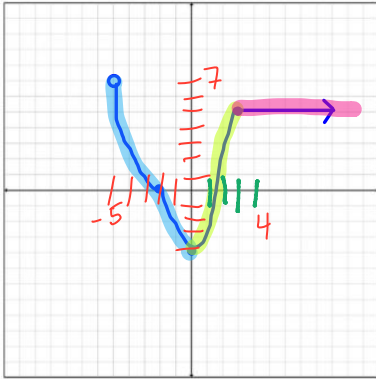
- Increasing Interval(s): $(-\infty, -2)$ $(4, \infty)$
- Decreasing Interval(s): $(-2, 4)$
- Constant Interval(s): none
- Absolute Minimum: none
- Absolute Maximum: none
- Relative Minimum: $(4, -6)$
- Relative Maximum: $(-2, 3)$
- Domain: $(-\infty, \infty)$
- Range: $(-\infty, \infty)$
- X-intercept: $(7.5, 0)$
- Y-intercept: $(0, -4)$
- End Behavior:

$x \rightarrow -\infty$	$y \rightarrow -\infty$
$x \rightarrow \infty$	$y \rightarrow \infty$

$x \rightarrow -\infty$	$y \rightarrow \infty$
$x \rightarrow \infty$	$y \rightarrow \infty$

3.1 Characteristics of Functions

Name: _____



Increasing Interval(s): $(0, 3)$

Decreasing Interval(s): $(-5, 0)$

Constant Interval(s): $(3, \infty)$

Absolute Minimum: $(0, -4)$

Absolute Maximum: $(-5, 7)$

Relative Minimum: none

Relative Maximum: none

Domain: $(-5, 0)$

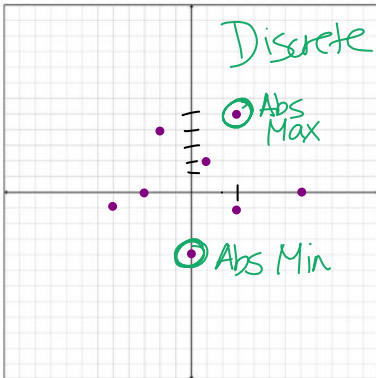
Range: $[4, 7)$

X-intercept: $(-2, 0)$ $(1.5, 0)$

Y-intercept: $(0, -4)$

End Behavior: $x \rightarrow -\infty$ $y \rightarrow \text{none}$ $x \rightarrow \infty$ $y \rightarrow 5$

$y \rightarrow \text{none}$ $y \rightarrow 5$



Increasing Interval(s): none

Decreasing Interval(s): none

Constant Interval(s): none

Absolute Minimum: $(0, -4)$

Absolute Maximum: $(3, 5)$

Relative Minimum: none

Relative Maximum: none

Domain: $\{-5, -3, -2, 0, 1, 3, 7\}$

Range: $\{-4, -1, 0, 2, 4, 5, 3\}$

X-intercept: $(-3, 0)$ $(7, 0)$

Y-intercept: $(0, -4)$

End Behavior: $x \rightarrow -\infty$ $y \rightarrow \text{none}$ $x \rightarrow \infty$ $y \rightarrow \text{none}$

$y \rightarrow \text{none}$ $y \rightarrow \text{none}$